

LIVE

LEARN

LEAD

MASTER'S PROGRAM IN
BIOTECHNOLOGY

Rajiv Gandhi Centre For Biotechnology (RGCB)

Thycaud Post, Poojappura, Thiruvananthapuram 695 014, Kerala, India.

Ph: +91-471-2529400, 2347975, 2348753, Fax: +91 471 2348096

webmaster@rgcb.res.in, www.rgcb.res.in



BIOTECHNOLOGY, REDEFINING HEALTHCARE MANAGEMENT.

The current pandemic has proven beyond doubt that research and development in healthcare management is vital for our society. The world has woken up to the real value of scientific breakthroughs and accurate diagnosis.

By providing innovative Biotech curricula and infrastructure for fresh minds to find future cures for infectious diseases and epidemics, institutions like RGCB are going to be the need of the hour.



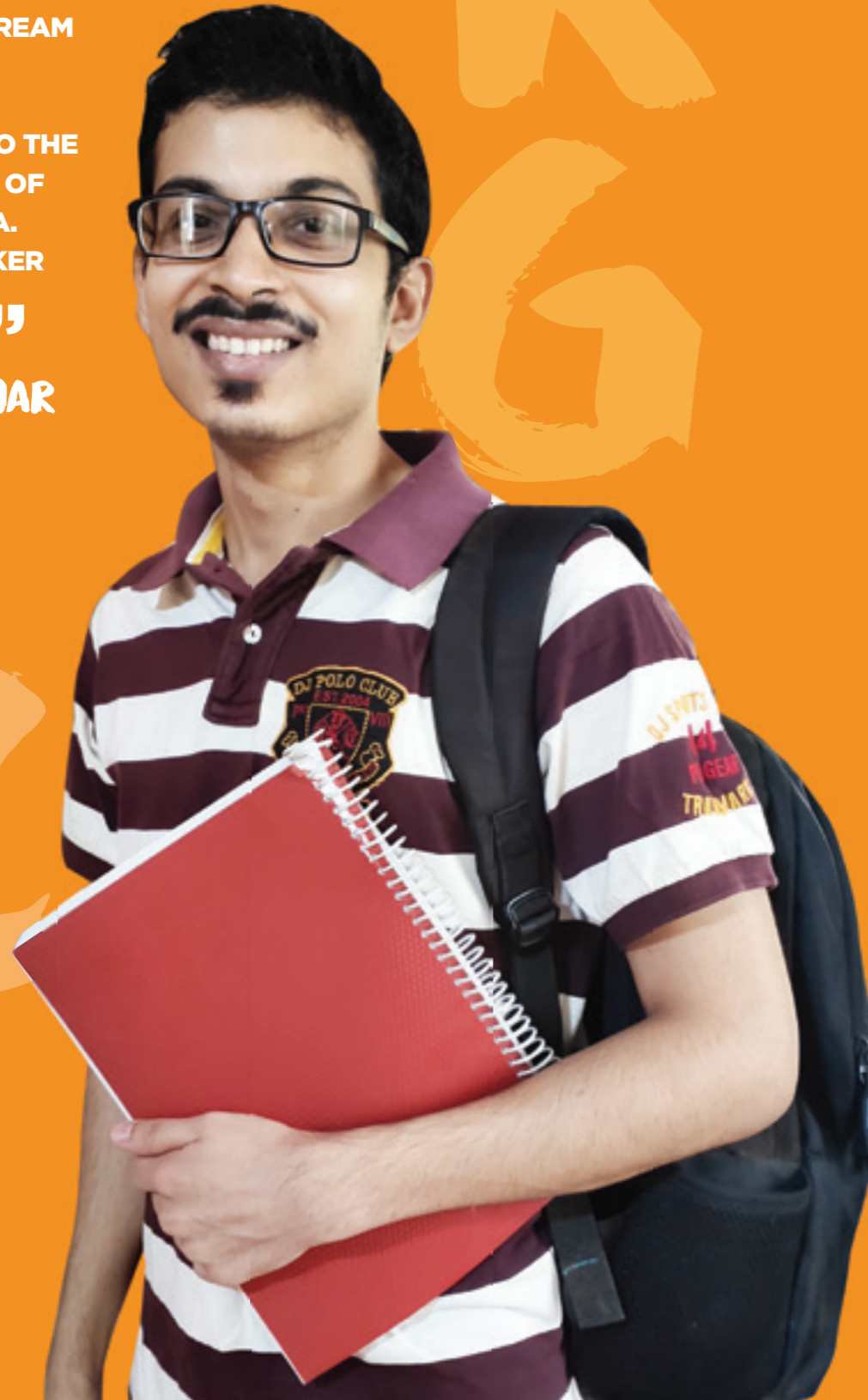
LEARN BIOTECHNOLOGY THE WAY IT IS MEANT TO BE LEARNED.

Say goodbye to boring lectures. Get ready to learn from scientists and real life scenarios. At RGCB Thiruvananthapuram, we prepare you for the real world. The RGCB MSc program is affiliated to the Regional Centre for Biotechnology, an 'Institution of National Importance' created by the Department of Biotechnology, Government of India under the auspices of UNESCO.

“ ATTENDING THE INTERNATIONAL CANCER RESEARCH MEETING (IACR 2020) WAS A DREAM COME TRUE FOR ME, THANKS TO RGCB. I WAS INTRODUCED TO THE FASCINATING WORLD OF REAL RESEARCH DATA. I HOPE TO BE A SPEAKER AT SUCH SESSIONS. ”

**MANTHAN SHEKHAR
BIJWE**

SECOND SEM STUDENT,
RGCB MSc. BIOTECHNOLOGY



As one of India's leading names in biotech, RGCB brings you top industry professionals and ample global exposure. Our research programs are focused on Chronic Disease Biology and Pathogen Biology. This means you will be part of the state-of-the-art discovery and research programs in Cancer Research, Cardiovascular Disease & Diabetes Biology, Infection Biology, Neurobiology, Chemical & Environmental Biology, Reproductive Biology, Plant Disease Biology and Genetic Engineering.

From its beginning as an autonomous national institute in 2007, RGCB has now developed into an institution of world-class standards. Located in Thiruvananthapuram, the capital city of Kerala, RGCB is spread across three campuses. The main campus at Jagathy, Thiruvananthapuram, is where the bulk of our discovery research programs are implemented. The second at the KINFRA Park, Thiruvananthapuram, functions as the transit facility for the Bio-Innovation Center housing Bio-Imaging, Genomics and Laboratory Medicine & Molecular Diagnostic core facilities in addition to laboratories for Chemical Biology, Pathogen Biology, Cancer Research and Computational Biology. The third campus in Kalamaserry, Kochi is called Bio-Nest and provide state-of-the-art biotechnology instrumentation platforms to develop startup companies and commercialise innovative indigenous technologies.



**REAL
RESEARCH
ENVIRONMENT**

**ONE-ON-ONE
SESSIONS**

**LEARN FROM
SCIENTISTS**

**TOP-TIER
LABORATORY
FACILITIES**

**HANDS-ON
LEARNING**

**ENTREPRENEURIAL
OPPORTUNITIES**

RGCB



LIVE AND LEARN BIOTECHNOLOGY LIKE NEVER BEFORE

The Master's Program in Biotechnology at RGCB is focused on creating highly skilled students in the field. The program covers the fundamental fields of theories in Biotechnology, while focusing on laboratory exercises and industrial as well as research applications, so that you will be well-versed in the concepts of "Enterprise and Entrepreneurship." Here, you will be trained in a real business and technology development bio-incubator where startup companies function. We even offer stipends to our MSc students.

“ THE MORE I LEARN ABOUT BIOTECHNOLOGY, THE MORE I LOVE IT. I ASPIRE TO BE A PART OF A RESEARCH GROUP THAT DISCOVERS REVOLUTIONARY CURES AND TREATMENTS THAT WOULD HELP PEOPLE ALL OVER THE WORLD. ONCE I JOINED RGCB, I KNEW THAT I WAS IN THE RIGHT PLACE. ”

FATHIMA HISANA K F

SECOND SEM STUDENT,
RGCB MSc. BIOTECHNOLOGY



WHAT
CAN YOU
SPECIALISE
IN?

DISEASE BIOLOGY

Understand the molecular basis of biological systems and focus on applying this knowledge to improve human health.

“ HAILING FROM ASSAM,
I WAS A LITTLE WORRIED
ABOUT HOW I WOULD
COPE IN A CITY LIKE
THIRUVANANTHAPURAM.
BUT I WAS IN FOR A REAL
SURPRISE. THE PEOPLE
HERE ARE SO FRIENDLY
AND HELPFUL. I AM
IN LOVE WITH THE PLACE
SO MUCH, THAT I AM NOW
LEARNING MALAYALAM. ”

SREEPARNA NATH

SECOND SEM STUDENT,
RGC B MSc. BIOTECHNOLOGY



GENETIC ENGINEERING

Master the fundamentals of molecular biology and learn about its applications in crop improvement, manufacture of biologicals and animal breeding.

MOLECULAR DIAGNOSTICS AND DNA PROFILING

Master laboratory medicine, applied genomics and DNA technology for accurate diagnostic support and molecular forensics real fast.

“ FOR ME, THIS IS
A REAL LEARNING
EXPERIENCE.
THERE ARE NO
TEACHER-STUDENT
BARRIERS. INSTEAD,
WE ARE ALL LEARNING
AND GROWING
TOGETHER.
WE REALLY FEEL
SO MUCH AT
HOME HERE. ”

DEEPAK SAHNI

SECOND SEM STUDENT,
RGC B MSc. BIOTECHNOLOGY



WHO CAN SIGN UP?

If you have cleared the Graduate Aptitude Test-Biotechnology and have 60% aggregate marks (or an equivalent grade point average) in a UGC approved bachelor's degree in any branch of Science, Engineering or Medicine, BDS, Ayurveda, other traditional systems of medicine, BVSc, BPharm, BTech and BSc Agriculture.

Candidates who belong to SC, ST, OBC (non-creamy layer) and PWD categories will be given 5% relaxation of aggregate marks.

If you are in the final year of your qualifying degree program, you can also apply provided you produce a proof of having secured the required marks in your undergraduate degree program at the time of admission.

A MODEL STATE FOR HEALTHCARE MANAGEMENT

India's oldest couple to beat Covid-19 are home for Easter
 Docs Kept Thomas (93) & Mariamma (88) Within Visible Range in ICU

Thomas, 93, and Mariamma, 88, were kept in the ICU at the Rajiv Gandhi Centre for Biotechnology (RGCB) in Thiruvananthapuram. The couple remained in the ICU for 14 days, with Thomas recovering first and Mariamma following. They were discharged on March 10, 2020. The doctors were stationed in the ICU since the start of the lockdown in Kerala. The couple's recovery was a surprise to the medical staff. The doctors were stationed in the ICU since the start of the lockdown in Kerala. The couple's recovery was a surprise to the medical staff.

Kerala has proven itself to be an outlier in the battle against COVID-19. With lessons learned from the Nipah outbreak, heightened vigilance, controlled cross-border inflows and isolation, this state has managed to flatten the curve effectively and has caught the attention of the world.

Kerala has highest recovery & lowest mortality rates so far
 No Spurt in Cases; Just Two Deaths

The state's recovery rate is the highest among all states, while its mortality rate is the lowest. This is attributed to the state's strict lockdown and early testing. The state's recovery rate is the highest among all states, while its mortality rate is the lowest. This is attributed to the state's strict lockdown and early testing.

Kerala gets ICMR nod to explore plasma therapy
 Blood From Cured Covid Patients To Treat The Sick

The ICMR has approved a protocol for experimental plasma therapy using blood from cured COVID-19 patients. This is the first state to start such experimental treatment. The ICMR has approved a protocol for experimental plasma therapy using blood from cured COVID-19 patients. This is the first state to start such experimental treatment.

Aggressive testing, contact tracing, cooked meals: How the Indian state of Kerala flattened its coronavirus curve

The Washington Post article highlights the success of Kerala's COVID-19 management strategy, which included aggressive testing, contact tracing, and providing cooked meals to those in isolation. The Washington Post article highlights the success of Kerala's COVID-19 management strategy, which included aggressive testing, contact tracing, and providing cooked meals to those in isolation.

FLATTENING THE CURVE, THE RGCB WAY.

Rajiv Gandhi Centre for Biotechnology to develop cheaper Covid-19 test kits

Our team has already started working on a cheaper version. Because of the lockdown, our researchers are unable to come to the institute. We will be able to develop the kit within two to three weeks.

The RGCB is developing a kit that is cheaper and easier to use than the current kits. The team is working on a kit that is cheaper and easier to use than the current kits. The team is working on a kit that is cheaper and easier to use than the current kits.

With excellent state-of-the-art infrastructure and qualified personnel, Rajiv Gandhi Centre for Biotechnology (RGCB) proved to be a formidable ally for the government in its battle against COVID-19. RGCB not only set up a clear clinical and discovery research roadmap on COVID-19, but also initiated steps to develop cost-effective diagnostic test kits to support outbreak management and maximise benefits to the public.

New strip to identify snake bite
 DC CORRESPONDENT THIRUVANANTHAPURAM, NOV 22

A strip that identifies the type of poisonous snake from a drop of the victim's blood in less than two minutes of testing may soon be available, which will help doctors administer the toxin-specific antivenom and spare victims of side effects of the polyvalent antivenom. The breakthrough invention was made by scientists at Rajiv Gandhi Centre for Biotechnology (RGCB), which fabricated the device at an in-house production cost of less than ₹50 apiece.

RGCB to finish DNA test of dead fishermen
 Arrangements made in labs to complete process on time

The RGCB is conducting DNA testing on the bodies of fishermen who died during the COVID-19 outbreak. The testing is being done to identify the cause of death and to provide compensation to the families. The RGCB is conducting DNA testing on the bodies of fishermen who died during the COVID-19 outbreak. The testing is being done to identify the cause of death and to provide compensation to the families.

State's captive elephants get genetic IDs
 How could help solve wildlife crime cases involving poaching and illegal trade

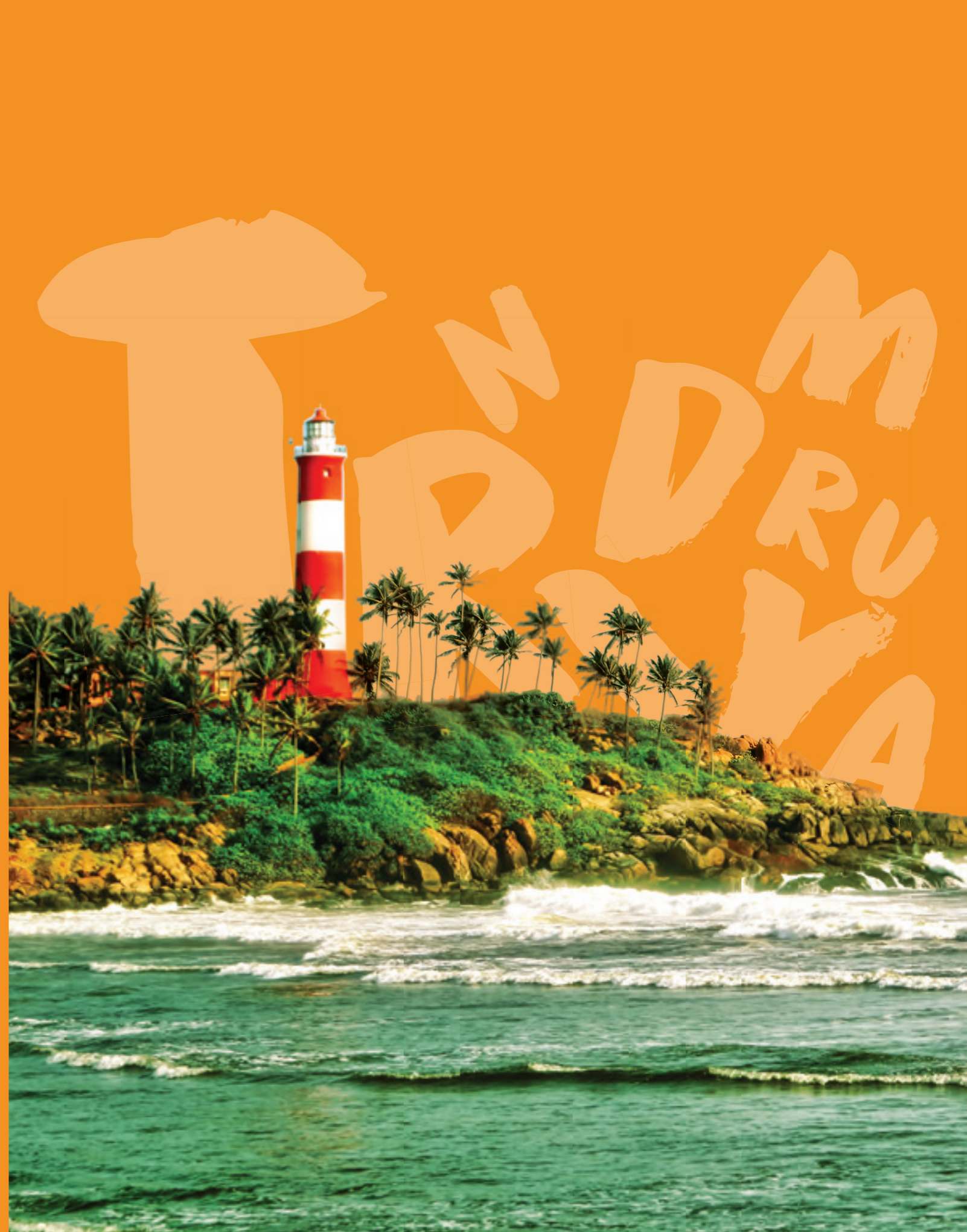
The RGCB has developed a genetic identification system for captive elephants. This will help in identifying poached elephants and in tracking illegal trade. The RGCB has developed a genetic identification system for captive elephants. This will help in identifying poached elephants and in tracking illegal trade.

REG

GET READY TO FALL IN LOVE WITH THIRUVANANTHAPURAM

It's the capital city of Kerala with a strongly rooted heritage and a nostalgic colonial legacy. A swanky metropolis with quaint urban charm and plenty of scenic places to visit. Incredible museums, beautifully designed palaces, sacred temples and sugary beaches... you name it, Thiruvananthapuram has it all. Come on over and fall in love.

LAB



“ I CAME ACROSS RGCB AFTER SPENDING A LOT OF TIME ONLINE LOOKING AT DIFFERENT COURSES. WHAT STOOD OUT FOR ME WAS THEIR BELIEF IN REAL RESEARCH BASED TEACHING AND HANDS ON EXPERIENCE FOR STUDENTS. I’VE BEEN LEARNING SOMETHING NEW EVERY DAY SINCE I’VE JOINED RGCB AND I’M SO GLAD I MADE THIS CHOICE. ”

J IRENE INFANCY

**SECOND SEM STUDENT,
RGCB MSc. BIOTECHNOLOGY**



**READY TO
LIVE,
LEARN AND
LEAD
THE WAY IN
BIOTECHNOLOGY?**

Get in touch with:
Office of Academic Affairs
Masters Program Division
Rajiv Gandhi Centre for Biotechnology (RGCB)
Thycaud P O, Thiruvananthapuram 695 014
Kerala, India, Web: www.rgcb.res.in
Email: masc@rgcb.res.in
Ph: +91 471 2529653, 2529655

FEES AND STIPENDS

Fee details (In Rupees)	Semester 1	Semester 2	Semester 3	Semester 4
One time admission fee	3500	--	--	--

Semester fees

Tuition fees*	40000	40000	40000	40000
Medical Insurance	1000	1000	1000	1000
University application fees	5000	5000	5000	5000
Exam fees	1000	1000	1000	1000
Deposits (Refundable)	10000	--	--	--

Hostel fees**

Room rent	10000	10000	10000	10000
Mess fees*** (Veg)	25000	25000	25000	25000
Mess fees*** (Non-veg)	35000	35000	35000	35000

*SC/ST/PWD candidates will be exempted from payment of tuition fees. OBC and economically backward forward class will be entitled to fee concession as per Government of India rules.

**Hostel fees will not be applicable to day scholars

***Mess fees inclusive of standard breakfast, lunch, dinner as well as morning and evening tea. Extras not included.

STIPENDS

All students selected for the MSc program will be awarded the RGCB-DBT Masters Stipend.

Intake for the current year:

- MSc Biotechnology (Disease Biology) = 15
- MSc Biotechnology (Genetic Engineering) = 10
- MSc Biotechnology (Molecular Diagnostics and DNA Profiling) = 15

IMPORTANT POINTS TO REMEMBER

Opening of applications: June, 2020

Entrance examination: July, 2020

Examination centers: 16 centers across India

Commencement of classes: August/September, 2020